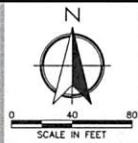


KNIGHT CAMPUS EPISCOPAL SCHOOL OF JACKSONVILLE



OTHER PROPOSED SIGNS		
TYPE	QTY	DESCRIPTION
A	1	STREET SIGN
B	5	HANDICAP
D	1	PRIVATE PROPERTY
E	1	FIELD DIRECTIONAL
M	2	BOYS/GIRLS LOCKER ROOM
N	2	MEN/WOMEN RESTROOMS
P	1	"E" SIGN
Q	1	KNIGHT FIELD HOUSE
R	1	LIGHTWEIGHT TRUSS/ADDRESS SIGN
V	1	LACROSSE CAPTAINS' WALL PLAQUE
W	1	LOGO FULL COLOR
X	1	GIVEN BY PLAQUE
Z	1	FALCONETTI COURT SIGN

PROPOSED WAYFINDING SIGNS		
TYPE	QTY	DESCRIPTION
1	2	SCHOOL SEALS AT ENTRANCE - BRICK WALL
2	1	KNIGHT CAMPUS - WAYFINDING SIGN
3	2	EPISCOPAL SCHOOL - WAYFINDING SIGN
4	1	WALTON BOAT HOUSE - WAYFINDING SIGN
5	1	CLEMENTS TENNIS CENTER - MONUMENT SIGN

PROJECT CONTACTS:

OWNER
EPISCOPAL SCHOOL OF JACKSONVILLE, INC
4455 ATLANTIC BLVD
JACKSONVILLE, FL 32207
(904) 398-5751
ATTN: DAVID HODGES, JR.

CIVIL ENGINEERS
ALMOND ENGINEERING, P.A.
6277 DUPONT STA. COURT EAST, SUITE 1
JACKSONVILLE, FL 32217
(904) 306-0162 PHONE

ATTN: MR. ERIC J. ALMOND, P.E.
EALMOND@ALMONDENGINEERING.COM

ATTN: MRS. HILLARY L. ALMOND, P.E.
HALMOND@ALMONDENGINEERING.COM

ARCHITECTS
DALGUESH GILPIN PAXTON ARCHITECTS
205 FIFTH STREET NE
CHARLOTTEVILLE, VA 22902
434 977 4480 PHONE

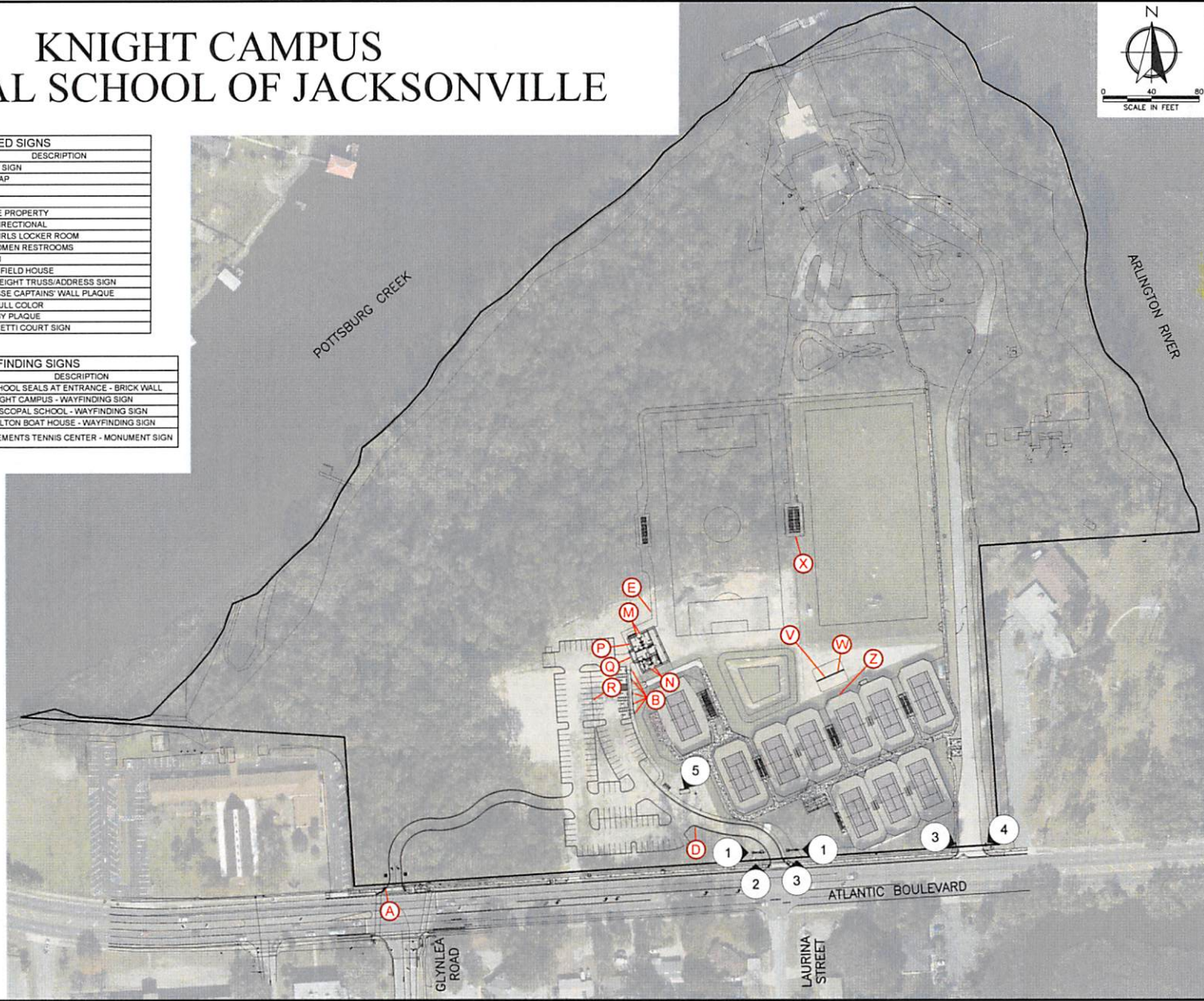
ATTN: ASHLEY LAFEW FALWEL, ASSOC. AIA
ASHLEY@OGPARCHITECTS.COM

SURVEYOR
CLARY & ASSOCIATES, INC
3830 CROWN POINT ROAD
JACKSONVILLE, FL 32257
(904) 260-3703

ATTN: GREGORY B. CLARY, P.L.S.

LANDSCAPE ARCHITECT
PITTMAN LANDSCAPE ARCHITECTURE
4049 SAN SERVERA DR. N
JACKSONVILLE, FL 32217
(904) 327-3068

BUCK PITTMAN
BUCK@PITTMANLA.COM



07-06-2018

Date	Revision

ERIC J. ALMOND, P.E.
FL# 59246

EPISCOPAL
SCHOOL OF JACKSONVILLE

AE JOB NO: 17-120
DESIGN: E.J.A.
DRAWN: JOK
CHECKED: E.J.A.
START DATE: 11-11-11
PLOT DATE: 9-6-2018

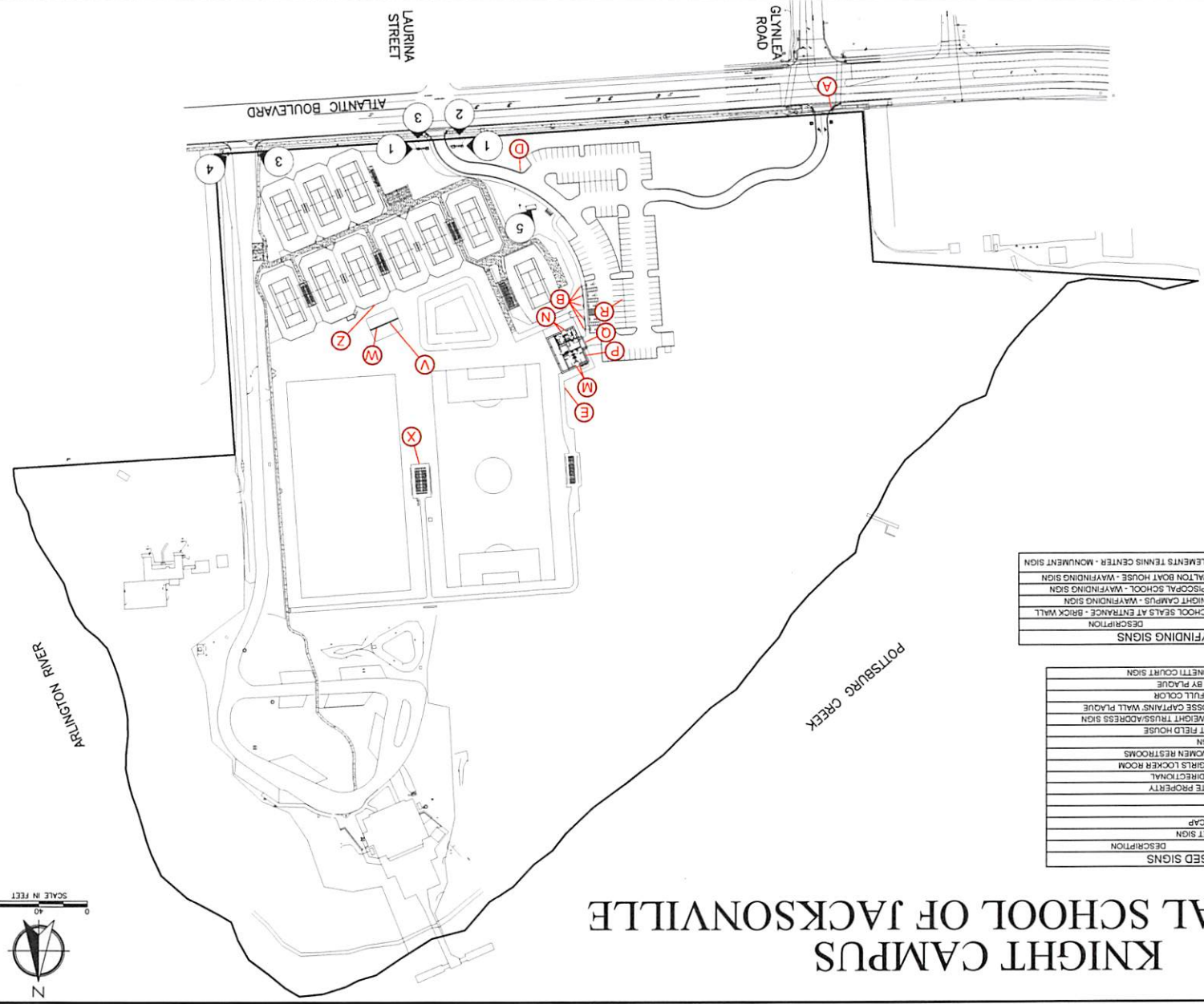
MASTER CAMPUS
AND SIGNAGE PLAN
WITH AERIAL

KNIGHT CAMPUS
ASSOCIATE ENGINEER
JACKSONVILLE, FL 32217

ALMOND
ENGINEERING
CONSULTING CIVIL ENGINEERS
6277 DUPONT ST. COURT EAST, SUITE 1
JACKSONVILLE, FL 32217
(904) 306-0162 PHONE (904) 306-2185 FAX

NOT FOR CONSTRUCTION, NOT FOR BIDDING - FOR REGULATORY REVIEW ONLY - 09-06-2018

KNIGHT CAMPUS EPISCOPAL SCHOOL OF JACKSONVILLE



PROJECT CONTACTS:

- OWNER
EPISCOPAL SCHOOL OF JACKSONVILLE, INC.
4455 ATLANTIC BLVD
JACKSONVILLE, FL 32207
- ATTN: DAVID HODGES, JR.
CIVIL ENGINEERS
ALMOND ENGINEERING, P.A.
6777 DUPONT STA COURT EAST, SUITE 1
JACKSONVILLE, FL 32217
(904) 306-0162 PHONE
- ATTN: MR. ERIC J. ALMOND, P.E.
EALMOND@ALMONDENGINEERING.COM
ALMOND ENGINEERING, P.A.
208 PIPER STREET, NE
CHARLOTTSVILLE, VA 22902
434 977 4400 PHONE
ASHLEY@GCPARCHITECTS.COM
SUREVISION
CLARY & ASSOCIATES, INC.
3830 CHOWN POINT ROAD
JACKSONVILLE, FL 32257
(904) 289-2703
- ATTN: GREGORY B. CLARY, P.L.S.
LANDSCAPE ARCHITECT
PITTMAN LANDSCAPE ARCHITECTURE
4405 S.W. BENDERA DR. N
JACKSONVILLE, FL 32217
(904) 327-3088
BUCK PITTMAN
BUCK@PITTMANLA.COM

TYPE	QTY	DESCRIPTION
1	2	SCHOOL SEALS AT ENTRANCE - BRICK WALL
2	1	KNIGHT CAMPUS - WAYFINDING SIGN
3	2	EPISCOPAL SCHOOL - WAYFINDING SIGN
4	1	WALTON BOAT HOUSE - WAYFINDING SIGN
5	1	CLEMENTS TENNIS CENTER - MONUMENT SIGN

TYPE	QTY	DESCRIPTION
A	1	STREET SIGN
B	5	HANDCAP
D	1	PRIVATE PROPERTY
E	1	FIELD DIRECTIONAL
M	2	BOYS/GIRLS LOCKER ROOM
N	2	MEN/WOMEN RESTROOMS
P	1	'E' SIGN
Q	1	KNIGHT FIELD HOUSE
R	1	LIGHTWEIGHT TRUSS/ADDRESS SIGN
V	1	LARGESSE CAPTAINS WALL PLAQUE
W	1	LOGO FULL COLOR
X	1	GIVEN BY PLAQUE
Z	1	FALCONETTI COURT SIGN

CONSULTING CIVIL ENGINEERS
1001 W. UNIVERSITY BLVD., SUITE 1
JACKSONVILLE, FL 32217
(904) 306-0162 PHONE (904) 306-2185 FAX

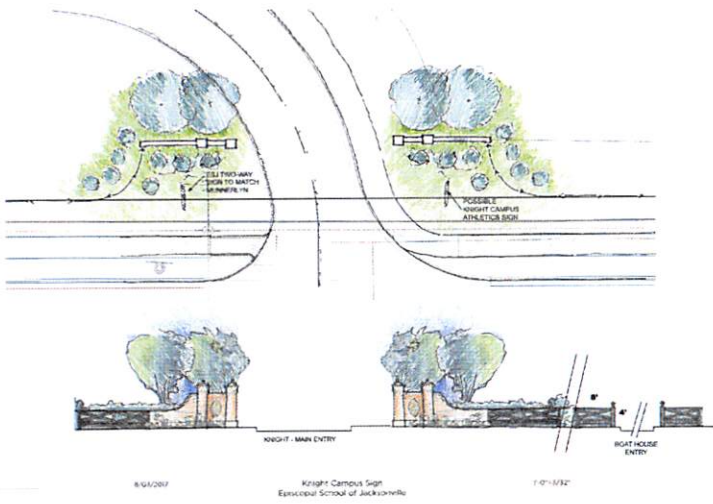
KNIGHT CAMPUS
MASTER CAMPUS
AND SIGNAGE PLAN

AT 208 NO. 17-120
DESIGN: E.J.A.
DRAWN: JOK
CHECKED: E.J.A.
START DATE: 09-06-2018
PLOT DATE: 09-06-2018

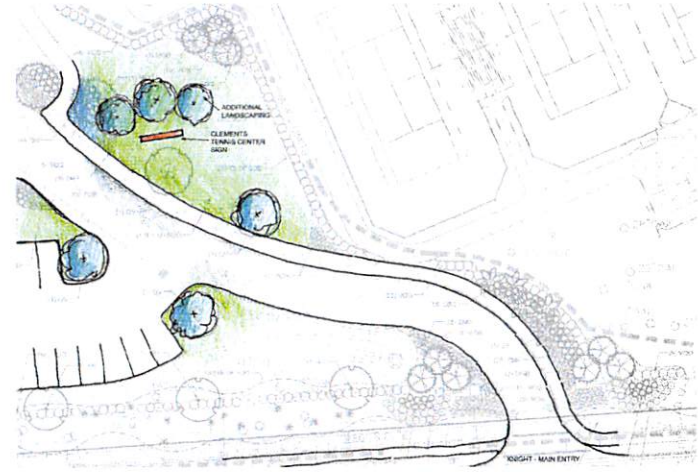
EPISCOPAL
SCHOOL OF JACKSONVILLE

ERIC J. ALMOND P.E.
FLS 92286

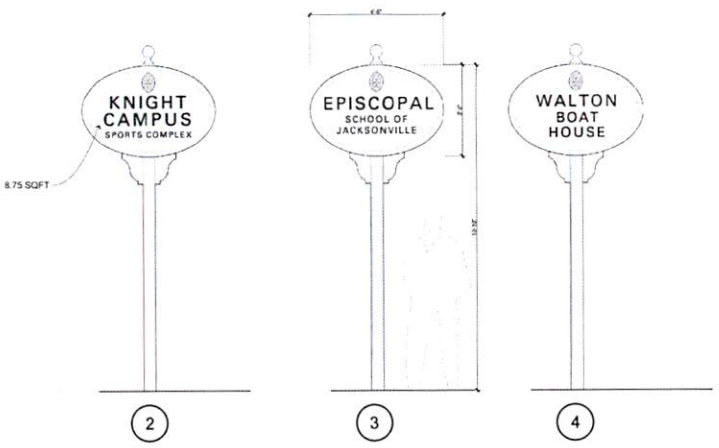




**Main Entry and Wayfinding Signs
Atlantic Boulevard**

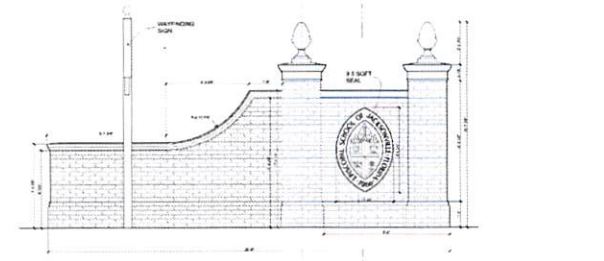


Clements Tennis Center Sign



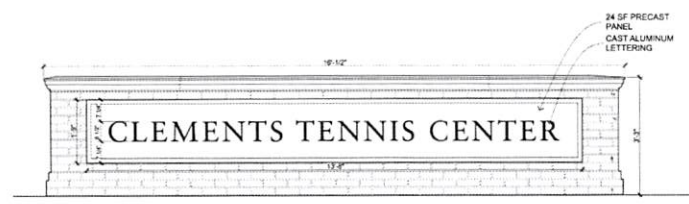
**Detail - Wayfinding Signs
Atlantic Boulevard**

- TWO-SIDED PYLON SIGN
- PANEL SIZE 3' HIGH X 4'-6" WIDE
- OVERALL HEIGHT 10'-10"
- TYPICAL OF 3



**1 Brick Wall with School Seals - Entrance
(typical each side)**

- SCHOOL SEALS IN BRICK WALL
- QUANTITY 2
- SCHOOL SEALS (2)
- SEAL SIZE 4'-6" HIGH X 3'-0" WIDE (9.5 SF EA)
- WALL HEIGHT 7'-0"



5 Monumental Signage - Tennis Center

- MONUMENTAL SIGNAGE (1)
- PANEL SIZE 1'-9" x 13'-8" (23.92 SF)
- WALL HEIGHT 3'-3"

07-06-2018
ERIC J. ALMOND, P.E.
F.L.P. 59246

Date	Revision



AE JOB NO.: 17-120
DESIGN: E.J.A.
DRAWN: JCK
CHECKED: E.J.A.
START DATE: 11-11-17
PLOT DATE: 9-6-2018

SIGNAGE DETAILS

KNIGHT CAMPUS
440 ATLANTIC BOULEVARD
JACKSONVILLE, FLORIDA 32202



3 of 5

NOT FOR CONSTRUCTION, NOT FOR BIDDING - FOR REGULATORY REVIEW ONLY - 09-06-2018

